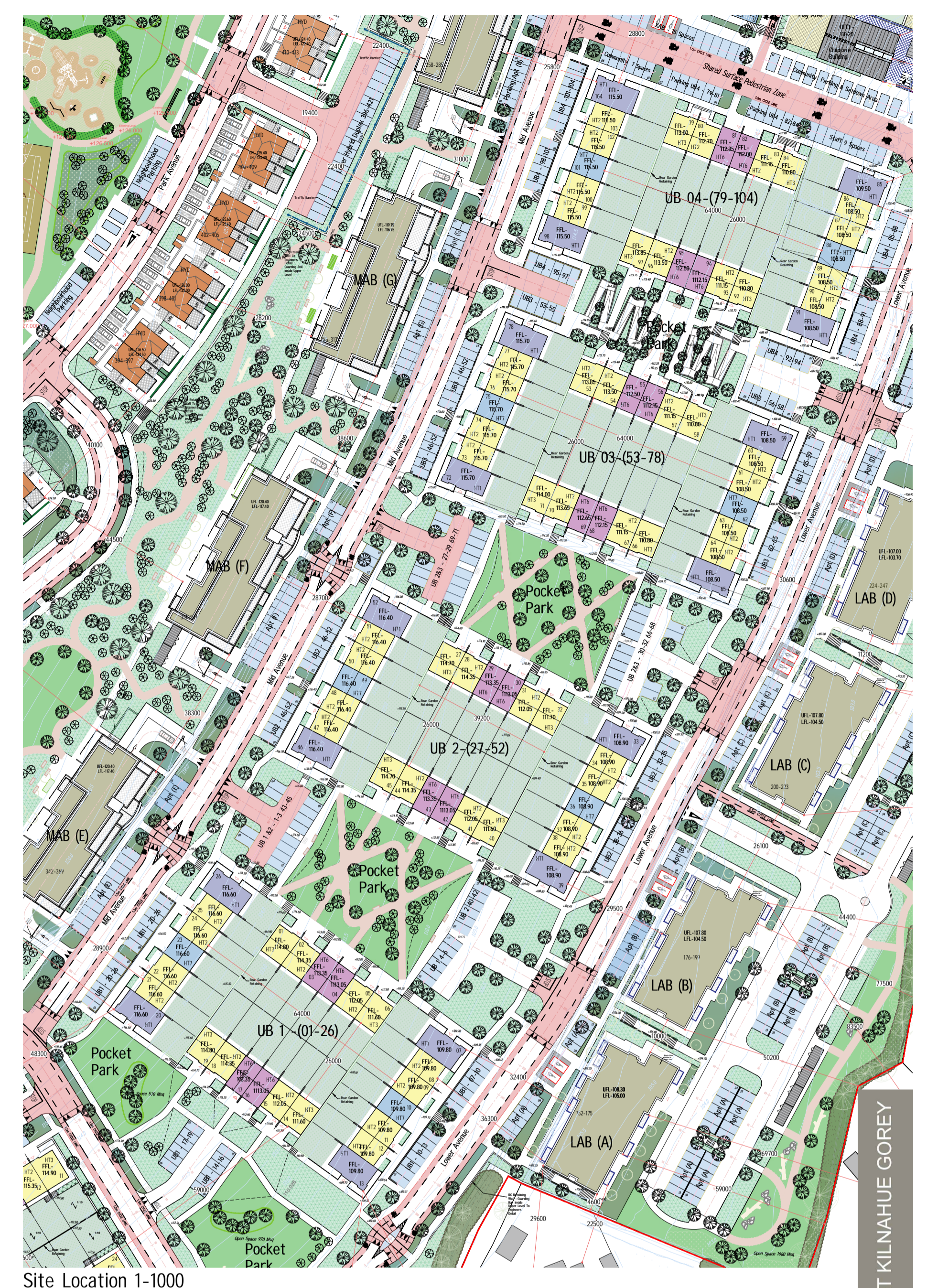
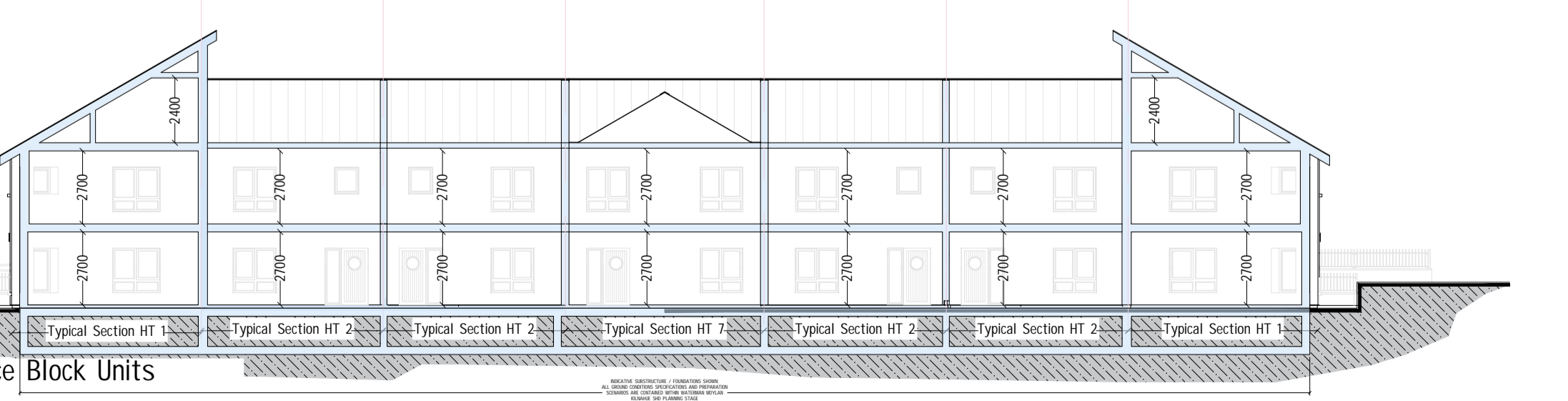
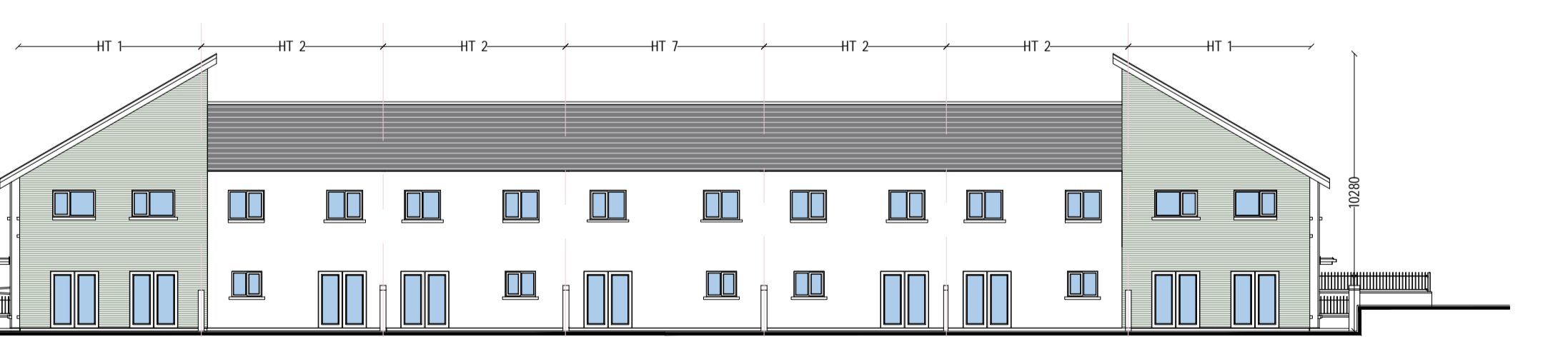
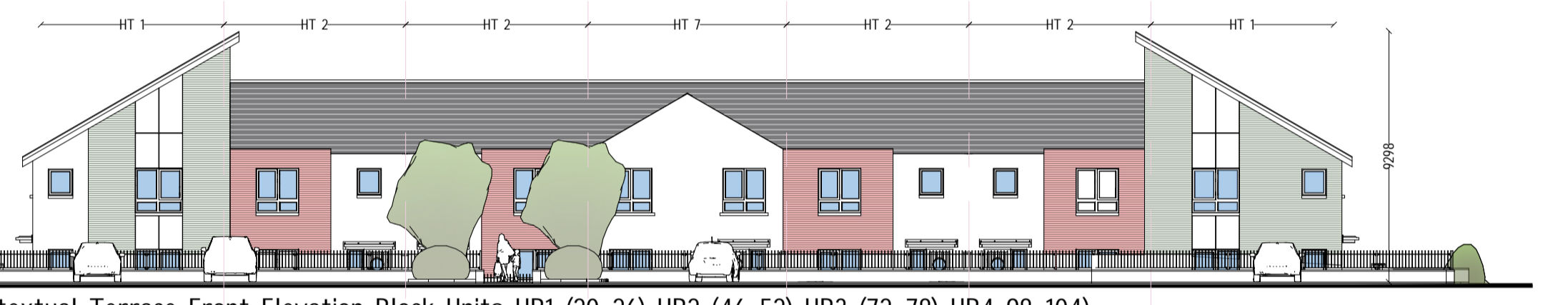
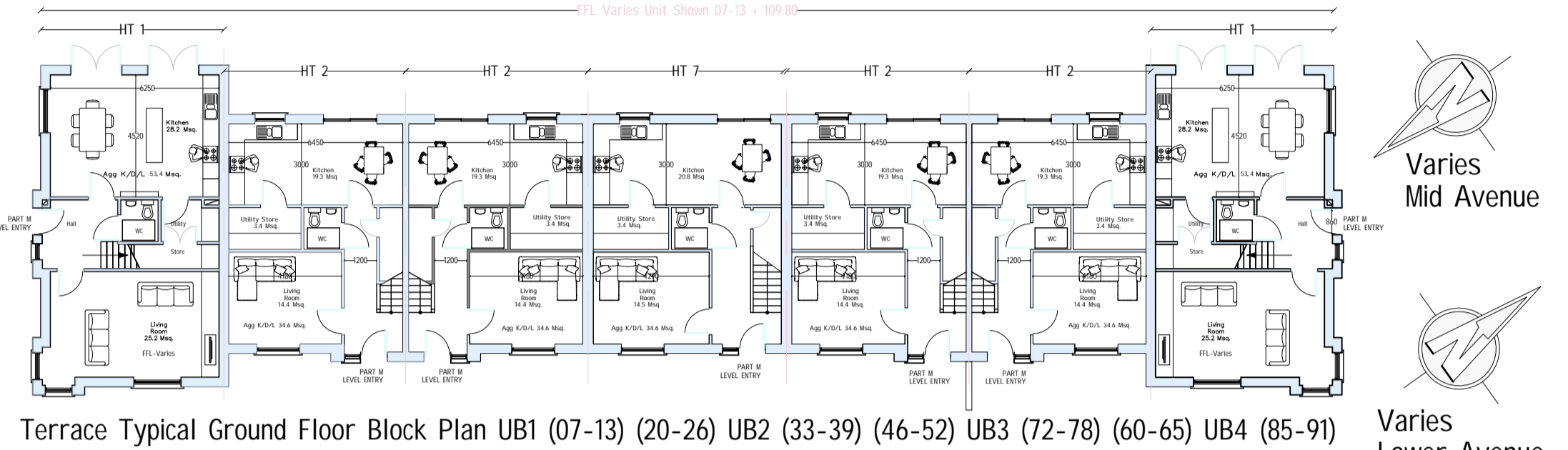
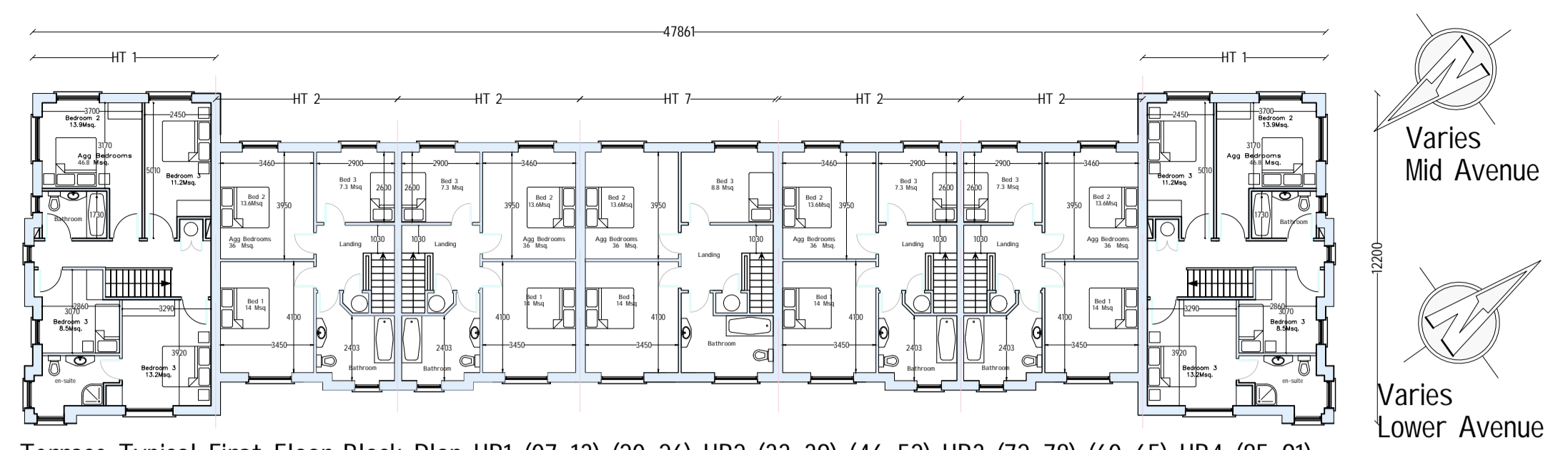


BUILDING MATERIALS ARE SUBJECT TO WEXFORD COUNTY COUNCIL PLANNING COMPLIANCE

BUILDING MATERIALS ARE SUBJECT TO WEXFORD COUNTY COUNCIL PLANNING COMPLIANCE



SHD APPLICATION - GERARD GANNON PROPERTIES - LANDS AT KILNAHUE GOREY

Housing Quality Assessment (HQA)

Urban Block (01) Audit 01-26

Dwelling Unit General Details			QHSC* 2007 Requirements					Residential Development Shd Kilnahue Gorey					Compliance Check					
Layout Unit No.	Unit Name	Configuration	No. Bedrooms	No. of Persons Required	Target Gross Floor Area L/D/K Required	Target Aggregate Bedroom Area Required	Internal Storage Space Required	Private Amenity Garden Required	Floor Area Total Provided	+ 10% Minimum Area	Aggregate Floor L/D/K Provided	Aggregate Bedroom Area Provided	Internal Storage Space Provided	Private Amenity Garden Provided	Parking Spaces Including UA Clearance	Adaptable Dwelling Unit (AC) Rear Extension (RE) (AR)	Compliance Check	
No.	Type	Type	No.	Beds	No.	Msq	Msq	Msq	Msq	Msq	Y/N	Msq	Msq	Meters	No.	Y-N/A	Y/N	
URBAN BLOCK UB1 - HOUSING 01-26																		
1	HT Type -3	End-Terrace	3	3	5P	92	34	32	5	75	106	Yes	34.6	36	5	90	2	(RE) Yes
2	HT Type -2	Terraced-Mid	3	3	5P	92	34	32	5	75	106	Yes	34.6	36	5	93	2	(RE) Yes
3	HT Type -6	Terraced-Mid	3	3	5P	92	34	32	5	75	102	Yes	34.8	33	5	69	2	(RE) Yes
4	HT Type -6	Terraced-Mid	3	3	5P	92	34	32	5	75	102	Yes	34.8	33	5	69	2	(RE) Yes
5	HT Type -2	Terraced-Mid	3	3	5P	92	34	32	5	75	106	Yes	34.6	36	5	93	2	(RE) Yes
6	HT Type -3	End-Terrace	3	3	5P	92	34	32	5	75	106	Yes	34.6	36	5	90	2	(RE) Yes
7	HT Type -1	Terrace-End	3	4	7P	110	40	43	6	75	142	Yes	53.4	46.8	6	88	2	(AC) (RE) Yes
8	HT Type -2	Terraced-Mid	3	3	5P	92	34	32	5	75	106	Yes	34.6	36	5	78	2	(RE) Yes
9	HT Type -2	Terraced-Mid	3	3	5P	92	34	32	5	75	106	Yes	34.6	36	5	78	2	(RE) Yes
10	HT Type -7	Terraced-Mid	3	3	5P	92	34	32	5	75	112	Yes	34.6	36	5	83	2	(RE) Yes
11	HT Type -2	Terraced-Mid	3	3	5P	92	34	32	5	75	106	Yes	34.6	36	5	78	2	(RE) Yes
12	HT Type -2	Terraced-Mid	3	3	5P	92	34	32	5	75	106	Yes	34.6	36	5	78	2	(RE) Yes
13	HT Type -1	Terrace-End	3	4	7P	110	40	43	6	75	142	Yes	53.4	46.8	6	88	2	(AC) (RE) Yes
14	HT Type -3	End-Terrace	3	3	5P	92	34	32	5	75	106	Yes	34.6	36	5	90	2	(RE) Yes
15	HT Type -2	Terraced-Mid	3	3	5P	92	34	32	5	75	106	Yes	34.6	36	5	93	2	(RE) Yes
16	HT Type -6	Terraced-Mid	3	3	5P	92	34	32	5	75	102	Yes	34.8	33	5	69	2	(RE) Yes
17	HT Type -6	Terraced-Mid	3	3	5P	92	34	32	5	75	102	Yes	34.8	33	5	69	2	(RE) Yes
18	HT Type -2	Terraced-Mid	3	3	5P	92	34	32	5	75	106	Yes	34.6	36	5	93	2	(RE) Yes
19	HT Type -3	End-Terrace	3	3	5P	92	34	32	5	75	106	Yes	34.6	36	5	90	2	(RE) Yes
20	HT Type -1	Terrace-End	3	4	7P	110	40	43	6	75	142	Yes	53.4	46.8	6	88	2	(AC) (RE) Yes
21	HT Type -2	Terraced-Mid	3	3	5P	92	34	32	5	75	106	Yes	34.6	36	5	78	2	(RE) Yes
22	HT Type -2	Terraced-Mid	3	3	5P	92	34	32	5	75	106	Yes	34.6	36	5	78	2	(RE) Yes
23	HT Type -7	Terraced-Mid	3	3	5P	92	34	32	5	75	112	Yes	34.6	36	5	83	2	(RE) Yes
24	HT Type -2	Terraced-Mid	3	3	5P	92	34	32	5	75	106	Yes	34.6	36	5	78	2	(RE) Yes
25	HT Type -2	Terraced-Mid	3	3	5P	92	34	32	5	75	106	Yes	34.6	36	5	78	2	(RE) Yes
26	HT Type -1	Terrace-End	3	4	7P	110	40	43	6	75	142	Yes	53.4	46.8	6	88	2	(AC) (RE) Yes



Lower & Mid Avenue Urban Housing
 UB1 (07-13) (20-26) UB2 (33-39) (46-52) UB3 (72-78) (60-65) UB4 (85-91) (98-104)

Unit No.11 To No.39 = 29 Units 29 No. Adaptable Units Compliance (100%)